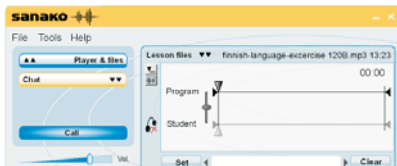


UNDERSTANDING THE CORE ACTIVITIES AND FUNCTIONS IN SANAKO STUDY 500

This document is a basic introduction to the essential features of SANAKO Study 500 – the software-based teaching solution that introduces the Internet and multimedia into instruction in any subject area. It outlines the core activities and functions in the system, and how they can be used in teaching using multimedia and managing a lesson in a multimedia environment.



The digital player in SANAKO Study 500 opens and plays media files in most formats.

The Study 500 Digital Player

multimedia classroom, it is possible to broadcast audio from the teacher position to the students using any external source, such as a cassette player or a CD player. The digital

player helps teachers to achieve an important goal in multimedia teaching, which is to expose students to many sources of information about a particular subject area, and in so doing, improve their understanding and ability to develop and communicate ideas on the subject matter.

The digital player opens and plays media files in commonly found formats, such as WAV, AVI, MP3, etc. The ability to expose students to many different media sources helps widen the range of source material they can refer to for study, research and discussion.

The teacher can remotely control the students' media playback and students can themselves play, stop, rewind, fast forward and pause files. In the Study 500 teaching environment, the ability to control playback of recorded material means that students can proceed at a speed that they find comfortable, rather than having to follow the faster or slower learners in the class.

Remote control student positions

The remote control feature gives the teacher the ability to take command of the students' screens. The ability to lock students' screens, perform shutdown and log-off routines on their computers, and to control their web browsing activities all form part of the remote control function, and helps the teacher efficiently manage the learning environment. In the ICT classroom, this is also a valuable feature to ensure that the teacher can keep students focused on the task before them.

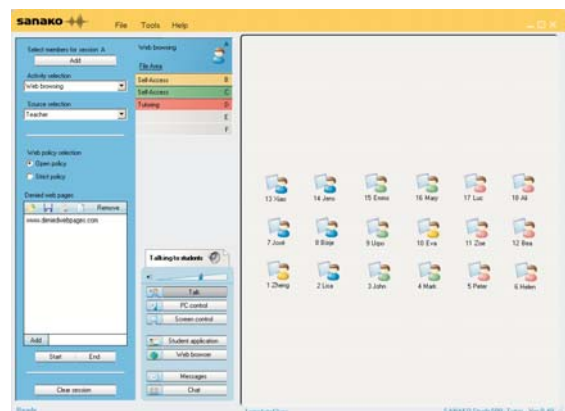
The teacher can also remotely collect all files from the students' computers for evaluation purposes.

Teach using any software as teacher may transfer his/her screen image to students and at the same time talk to the students.

The ability to transfer the teacher screen to multiple student workstations means that all students in the IT/multimedia classroom don't have to have specific software to view associated files. Once the teacher has the software, files and applications can be launched and shown to all students. It means that the teacher has more options for setting up a variety of classroom activities, since all student computers don't need to have the required software.

Monitor student's work (screen image and audio)

Student screen thumbnails can be viewed in a separate window in the teacher's interface in Study 500. This unique feature allows teachers to closely follow the activity on the student screens, while they listen to student audio.



Teachers have powerful remote control functions, to help keep students focused.



The teacher can select which student's audio and screen activity they want to monitor, automatically or manually. This feature helps teachers follow students' progress with different exercises and activities, and allows them to intervene just when their assistance is most needed.

Launch applications, launch files to students

This important classroom management function allows teachers to open applications on student computer, either for the entire class, or for a group of students. It also enables the teachers to copy and open selected files for chosen students to work on. The ability to launch applications and files directly from the teacher's computer to the student's means that no time is lost in switching over from one task to another, or in assigning work for separate groups. Both teachers and students are able to optimize the time spent in this digital classroom.

Written Communications

Teachers can communicate with students in Study 500 by sending messages, which are displayed in a separate message window. This feature is useful for offering additional guidance and instruction to students, while they proceed with assigned tasks. The text chat feature can be used by both teachers and students for quick and easy communication, without disturbing other students as they work. Students may also exchange text chat messages among themselves.

Audio Communications

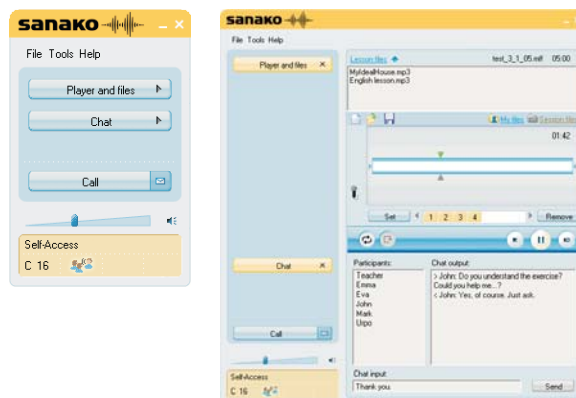
Study 500 provides a one-way audio connection for the teacher to talk to an individual student, a group of students, or the entire class. Teachers may also listen in to students' activities and participate as needed. The Library mode allows students to work independently, however, the teacher is still free to monitor and have voice communication with students in this mode. Study 500 audio communications have been designed to ensure that the teacher can maintain voice contact with students to give guidance and instruction when they are needed, without distracting others during the lesson.

Screen transfer with audio

Sanako Study 500 encourages more collaboration and interaction in the multimedia environment by allowing teachers to share the contents of their screens with students' workstations, while talking to the students at the same time. Screen transfer is available for individual student workstations, groups or all stations in the class. Teachers can effortlessly collaborate with selected students by accessing their computers to guide them with assigned tasks while communicating orally.

**More information about SANAKO Study 500 available from:
SANAKO Corporation**

P.O. Box 41
FIN-20741 Turku,
Finland
Phone +358 2 2166 500
Fax +358 2 2166 527
www.sanako.com



Listening comprehension is one of the key exercises that help students improve their foreign language skills.

Bookmarking

Bookmarks are used for marking passages in audio and video material, so that the teacher can easily return to selected passages without having to rewind or fast-forward to find them. Clicking on a set bookmark starts a media file playing from the selected passage. Students can also open media files and set, clear, name and search for bookmarks. Setting bookmarks means that students can easily return to sections in the file that require additional attention, either to better understand them, to review the material covered, or to search for answers to questions set by the teacher.

Library Mode

The Library Mode feature has been designed to allow students to work individually with media files assigned by the teacher. Even if all students have been assigned the same file, they have independent control over it, and can work at their own pace. Teachers are able to save the student files for later use, making this feature ideal for assessing student capabilities working with the same material.

